

CHALLENGES

The only test management solution available today within a complete application lifecycle management system. Traceability through every stage of the software development process ensures complete test coverage and facilitates collaboration between business users, quality assurance and software development.

TESTING AS PART OF THE LIFECYCLE

Effective test management ensures the delivery of quality projects. All requirements must receive complete test coverage and issues discovered during testing must be accurately tracked, evaluated and resolved. This ensures the end product meets the stated requirements and meets acceptable functional and performance criteria.

Typically, test management products are delivered as standalone solutions, creating an island within Quality Assurance, disconnected from the rest of the team.

Collaboration between analysts who write requirements and developers who resolve defects may not be provided, resulting in the need for integration with external requirements management and defect management solutions. Project Managers looking for complete information on the status of their project have no single system available that provides the comprehensive picture they require.

THE SOLUTION

You are seeking the ultimate integrated test management solution — one that ensures complete test coverage of all requirements, stimulates collaboration between developers, quality assurance and business users and maximizes efficiency, collaboration and traceability.

MKS Test offers a completely integrated approach, where test management is an integral part of a continuous process connecting design, development, testing and deployment phases of the application lifecycle.

MKS's solution is built on the foundation of MKS Integrity's highly flexible and powerful process and workflow engine.

Manage the QA effort with confidence and complete control — and within the context of the complete application lifecycle.

- **QUALITY ASSURANCE MANAGERS** must ensure complete test coverage of all requirements within a project. With MKS Test they plan testing, monitor test coverage and evaluate the level of maturity of the software through defect management and other key test related metrics. At all times the ongoing status of the QA effort can be clearly evaluated against the stated test plan to ensure objectives are being met.

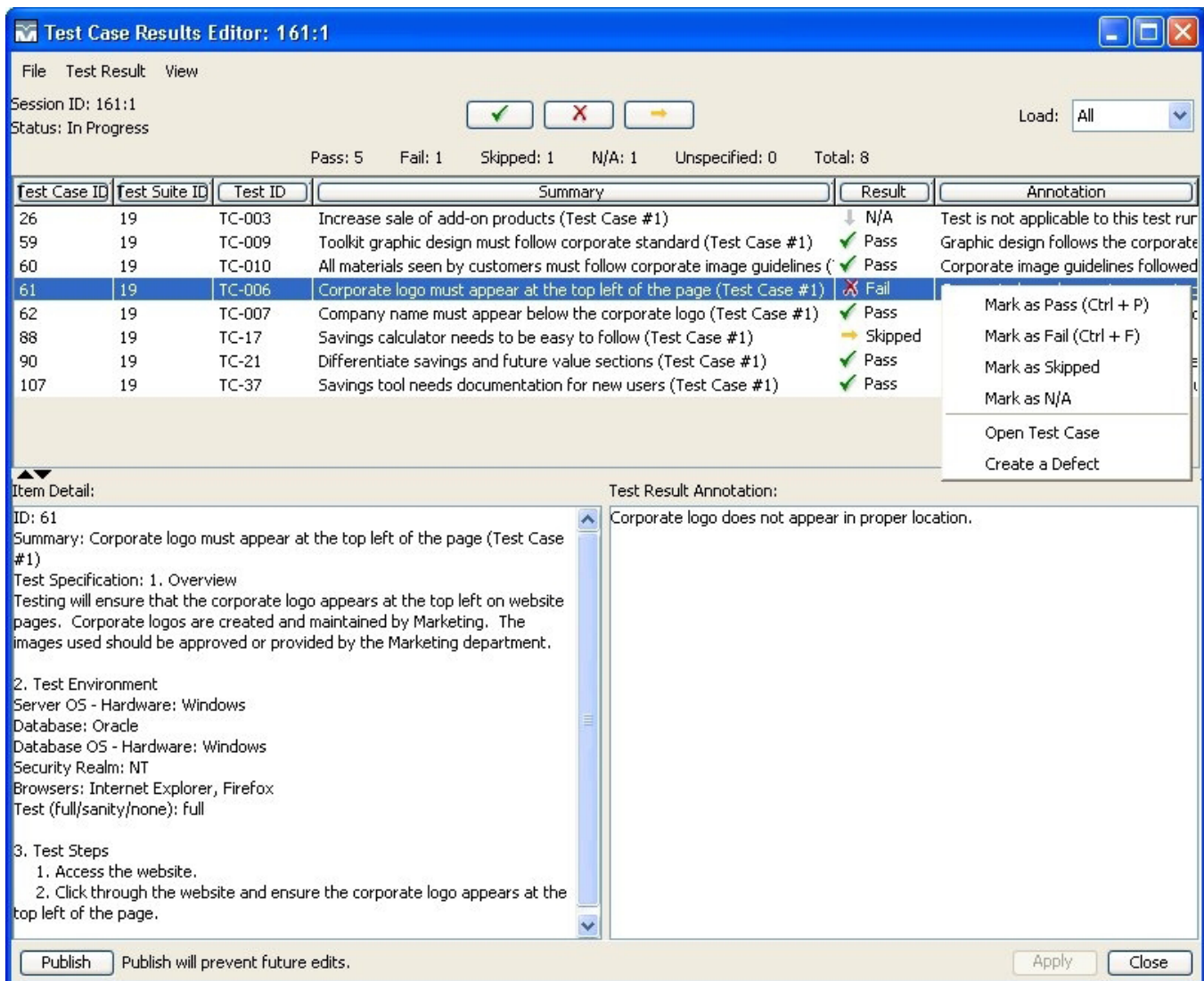
- **TEST EXECUTORS** record test results and create defects which are assigned to developers for resolution.

- **TEST AUTHORS** can prepare detailed manual test cases or link to external automated test execution scripts.

- **CIOs and CTOs** are confident the applications being delivered meet the stated business goals. Metrics on the costs and effort spent during the QA process are rolled up to their management dashboards.

- **BUSINESS ANALYSTS** use the same system where they define requirements to provide their input into test case specifications. They can clearly determine that test plans are in place, ensuring requirements will be adequately tested.

- **DEVELOPERS** receive real time notification of tasks assigned to them to resolve defects in the same system where they are created. All development changes made to fix the problem are directly linked to the defect, thus providing complete traceability back to the test case and the requirement.



Test case results editor provides a focused environment where Test Executors work

FEATURES AND BENEFITS

Achieve traceability between requirements, test cases, defects and related development activities.

- Traceability between requirements, test cases, defects and the related development activities ensures the project receives complete test coverage while enabling teams to easily determine the status of an entire project and to assess the impact on testing work by changing requirements.
- Powerful querying, charting, reporting and dashboards via integrated portfolio management capabilities provides management visibility into test planning & execution coverage and overall project status.
- Test Results Editor provides a focused environment where Test Executors work. Results of manual testing can be entered, querying for existing defects on a test case can be performed, new defects can be raised and linked to the workflow and attachments can be added. Additionally,

test results captured via automation can also be displayed and reviewed within this editor.

- Automated Test Execution Framework integrates MKS Test with external automated test execution tools. The execution of automated tests and subsequent results can be recorded in MKS Test for review by testing personnel.
- Historical reporting enables project managers, business users and QA Managers to view how the project, requirements and test cases have changed over time, facilitating team collaboration and communication.

Trace Exceptions Health Distribution
Detail the health and distribution of elements in a requirements trace.

Issues	Trace Health	# Functional Specifications	# Tasks	# CPs	# Test Cases
25 Increase sale of add-on products	●	1	1	1	1
26 Apply cost savings into sale of investment product	●	1	1	1	1
27 No third party components (except those approved)	●	0	0	0	1
62 All materials seen by customers must follow corporate image guidelines	●	3	2	2	1
63 Toolkit graphic design must follow corporate standard	●	3	2	2	1
67 Corporate logo must appear at the top left of the page	●	0	0	0	1
68 Company name must appear below the corporate logo	●	0	0	0	1
69 Rollout finds no critical bugs within first 6 months	●	0	0	0	1
97 Savings calculator needs to be easy to follow	●	1	1	1	1
99 Separate the savings and future value sections	●	0	0	0	1
100 No cross-platform references (since reusable component)	●	0	0	0	1
114 Savings tool needs documentation for new users	●	1	1	0	1
115 Data should be collected in multiple guided steps	●	1	1	0	1
121 Add general usage instructions	●	1	0	0	0
122 Add tool tips	●	1	0	0	1
Total		6	13	9	14

ABC Financial, Inc. All rights reserved.

Trace exception reports clearly identify any areas of concern

MKS Integrity Also Offers:

MKS Integrity for Portfolio Management

MKS Integrity for Requirements Management

MKS Integrity for Process and Workflow Management

MKS Integrity for Configuration Management

MKS Integrity for Release Management

Implementer for System i

- Suspect link flagging and reporting captures changes to requirements and notifies appropriate personnel — business users, test authors and QA Managers — of possible impacts to the testing process reports and dashboards.

- Deep integrations into Eclipse and .NET environments and Open API provides easy integration into other existing tool and technology environments.

If you are upgrading from a previous release of MKS Integrity your current system requirements have not changed.

If you are installing MKS Integrity for Test Management for the first time, you should consult MKS Global Customer Care (800-219-4842 or support@mks.com) to help determine what your particular system requirements are. Many factors, such as number of users, datasets and usage profiles need to be assessed in configuring the optimal system.

MKS

Call us:

North America: 1 800 613 7535

UK & Northern Europe: 44(0)1483 733900

Germany & Rest of Europe: 49(0) 711 3517750

Japan and Singapore: 65 6732 8768

Rest of the World: 519 884 2251

Visit us:

www.mks.com

Email us:

sales@mks.com